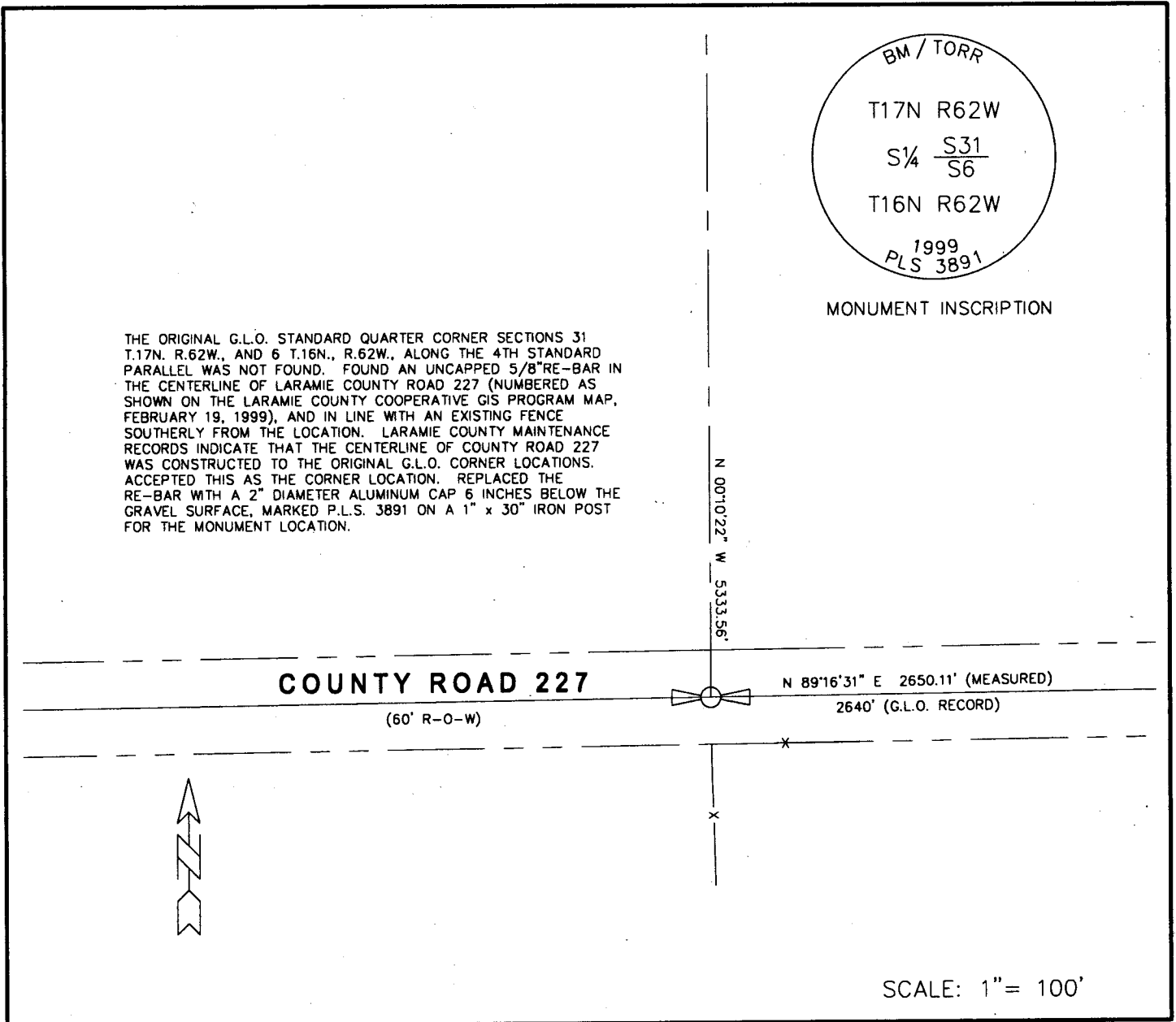


State of Wyoming Corner Record

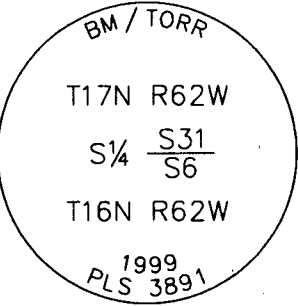
(In compliance with the *CORNER PERPETUATION AND FILING ACT*, Wyoming Statutes, 1977, Section 36-11-101, et. seq., and the Rules and Regulations of the Board of Registration for Professional Engineers and Professional Land Surveyors)

Reverse side of this form may be used if more space is needed.

Record of original survey and citation of source of historical information (if corner is lost or obliterated). Description of corner monumentation evidence found and/or monument and accessories established to perpetuate the location of this corner. Sketch of relative location of monument, accessories, and reference points with course and distance to adjacent corner(s) (if determined in this survey). Method and rationale for reestablishment of lost or obliterated corner.



THE ORIGINAL G.L.O. STANDARD QUARTER CORNER SECTIONS 31 T.17N. R.62W., AND 6 T.16N., R.62W., ALONG THE 4TH STANDARD PARALLEL WAS NOT FOUND. FOUND AN UNCAPPED 5/8" RE-BAR IN THE CENTERLINE OF LARAMIE COUNTY ROAD 227 (NUMBERED AS SHOWN ON THE LARAMIE COUNTY COOPERATIVE GIS PROGRAM MAP, FEBRUARY 19, 1999), AND IN LINE WITH AN EXISTING FENCE SOUTHERLY FROM THE LOCATION. LARAMIE COUNTY MAINTENANCE RECORDS INDICATE THAT THE CENTERLINE OF COUNTY ROAD 227 WAS CONSTRUCTED TO THE ORIGINAL G.L.O. CORNER LOCATIONS. ACCEPTED THIS AS THE CORNER LOCATION. REPLACED THE RE-BAR WITH A 2" DIAMETER ALUMINUM CAP 6 INCHES BELOW THE GRAVEL SURFACE, MARKED P.L.S. 3891 ON A 1" x 30" IRON POST FOR THE MONUMENT LOCATION.



MONUMENT INSCRIPTION

COUNTY ROAD 227

(60' R-O-W)

N 89°16'31" E 2650.11' (MEASURED)

2640' (G.L.O. RECORD)

SCALE: 1" = 100'

Date of Field Work: JUNE, 1999

Office Reference: Z-031762.dwg

CROSS INDEX DIAGRAM

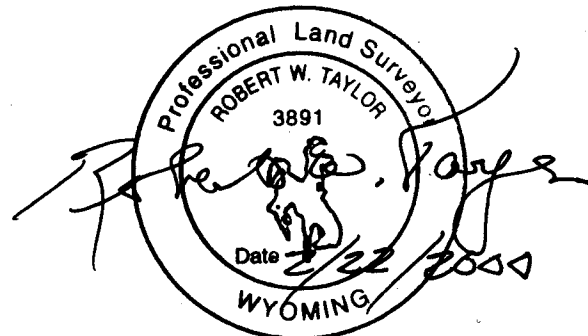
	1	2	3	4	5	6	7	8	9	10	11	12	13	14	15	16	17	18	19	20	21	22	23	24	25
A																									
B		6																							
C			5																						
D				4																					
E					3																				
F						2																			
G							1																		
H																									
J																									
K																									
L																									
M																									
N																									
O																									
P																									
Q																									
R																									
S																									
T																									
U																									
V																									
W																									
X																									
Y																									
Z																									

Firm / Agency, Address

BenchMark of _____
Torrington, P.C.
2510 West "C" Street · P.O. Box 99
Torrington, WY 82240
 Phone Number: (307) 532-3811

This corner record was prepared by me or under my direction and supervision.

SEAL & SIGNATURE



Corner Name: S 1/4 CORNER
 SBRPEPLS/PLSW: March 1994

Section: 31 T17N R62W 6th P.M. Cross-Index No.: Z-03